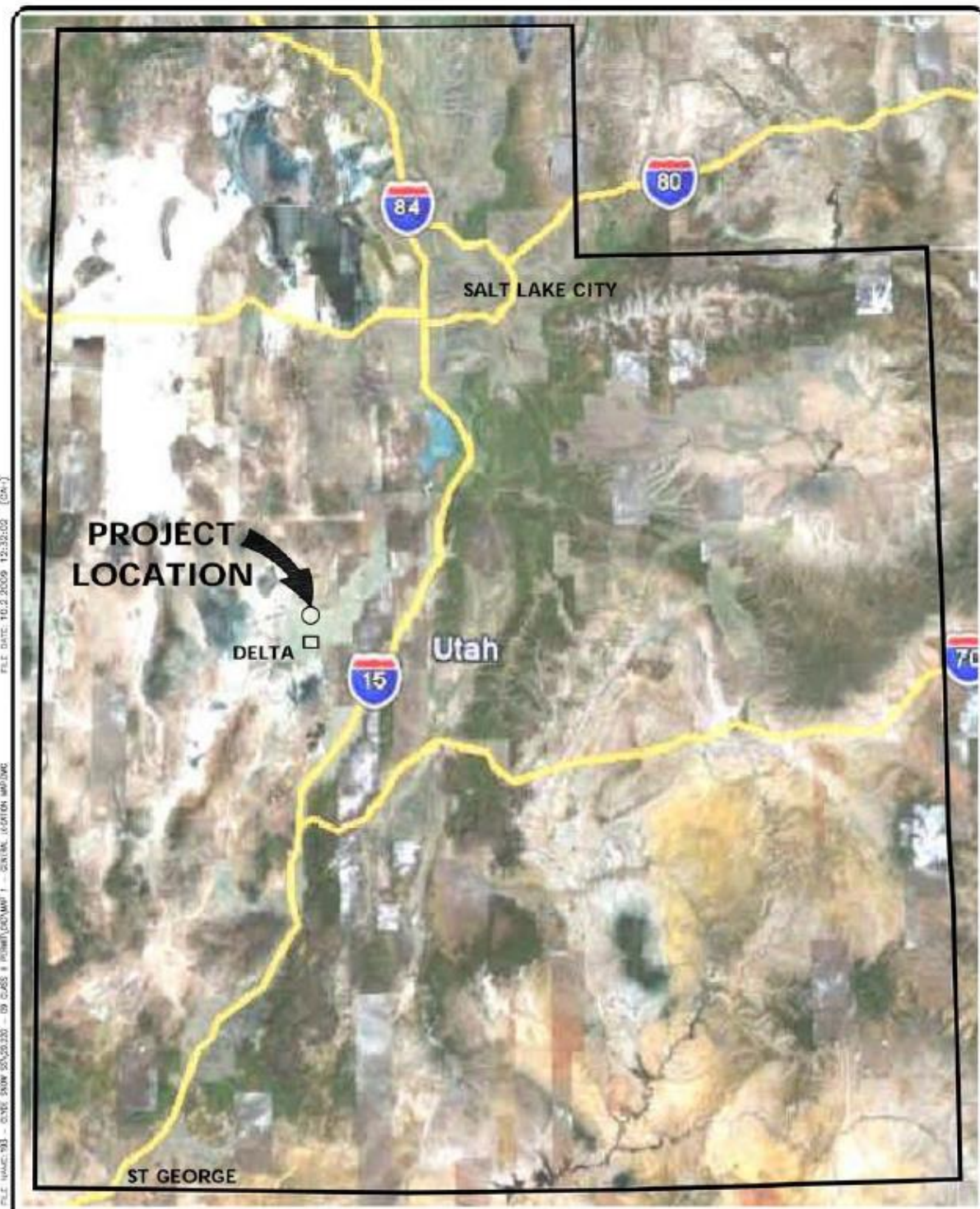


Attachment A

General Location Map of the NGL E.P. NGL Storage Project,
Millard County



FILE DATE: 10.2.2009 12:32:00 (DHW)

FILE NAME: 93 - CIVIL - 2009 10/2/2009 - 09 0455 - 10/2/2009 12:32:00 - CIVIL - 10/2/2009 12:32:00



GENERAL LOCATION MAP

FIGURE 1